

Ulter-Sport

COOPERATION
Possibilities



AGENDA

OUR COMPANY

Who we are and
what we do

PROCESSES and SERVICES

Presentation of our
production capabilities

INVESTMENTS PLAN

Development plan for
coming period

CONTACT

01

02

03

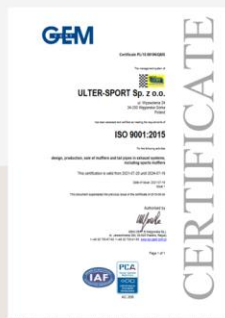
04



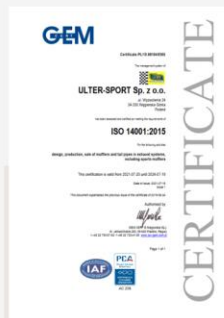
ABOUT COMPANY

Ulter-Sport is a Polish company that produces sports' mufflers and tailpipes. The beginning of the Ulter company dates back to 1986 – along with the growing demand of the car market for sports exhaust systems, the company launched the production of mufflers and sports tailpipes. Over the years, new technologies and high-performance materials have been introduced into the production process.

In addition to its long-term activity in the parts and accessories of aftermarket and the tuning market, Ulter-Sport is also dynamically developing production in OEM segment. Ulter produces exhaust system components for TIERs cars' suppliers. Production is carried out for renowned car manufacturers both in Poland abroad.



ISO9001



ISO14001



IATF16949



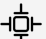










CERTYFIKATY



Our production capabilities

The list of process and services that we can perform as part of cooperation:

-  ● WELDING
-  ● FINISING (Grinding / Polishing / Brushing)
-  ● SHAPING (Rolling / Calibration / Cutting / Bending, etc)
-  ● SPOT WELDING
-  ● LASER ENGRAVING
-  ● PARTS WASHING in basket with dimension 440x250x730 mm – surface tension > 32 mN/m
-  ● DESIGN AND PRODUCTION OF PROTOTYPES
-  ● DESIGN AND PRODUCTION OF TOOLING AND MACHINES
-  ● COATING
-  ● LABORATORY OF QUALITY CONTROL
 - Check of dimentional conformity of part with its 3D model (**measuring arm**)
 - Testing the geometrical of the weld joint -
 - Evaluation of the adhesion of the electroplated coating by the cross-cut method according to ISO 2409
- 3D PRINTING OF PART with dimensions 265x265x300 m
-  ● ASSEMBLY





WELDING

AUTOMATIC 5-Axis COMPANY-OWN DESIGN



LONGITUDINAL COMPANY-OWN DESIGN



MANUAL

with the use of positioning devices
(which we can design and manufacture ourselves)





ROBOTIC WELDING

KUKA Welding station

with Fronius Trans Puls Synergic 3200 CMT
source and rotary positioner

Working area: 1200x700mm; load capacity 150kg



ABB Welding station

with Fronius Trans Puls Synergic 500i CMT
source with a turnable positioner

Working area: 2000xØ1300mm; load capacity 500kg





FINISHING

GRINDING / POLISHING /
BRUSHING

ROBOTIC



Cell for robotic grinding
and polishing on a
KUKA robot with a load
capacity of 200 KG



PLANETARY
SEMI-AUTOMATIC



MANUAL



For automotive projects we work with the cooperation partner → applying a galvanic coating, preparation of the surface for the coating (plain, 3+, dark chrome)



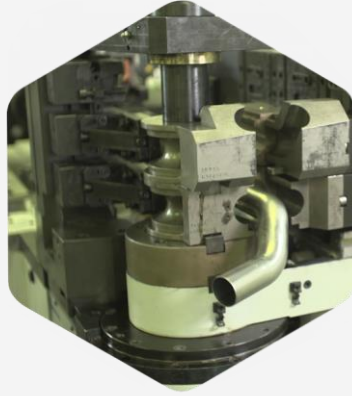
SHAPING

- Folding of sheet metals/blanks designed for a specific part
Sheet with **thickness up to 2 mm** – **minimal bending radius r40**, **max width of part 550 mm**, **max diameter d300 mm**
- Delarging / expanding/ embossing and shaping tubes
- Stamping of metal sheets and tubes
Sheets and tubes with thickness up **to 2 mm**; diameter **max d180 and length 300 mm** – in the field of small and medium-sized details
- Calibrating the dimension of tubes for diameters from **35mm do 75mm with length max 70mm**
- Wrapping and rolling up the ends of rounded and shaped tubes **with radius from r 3 to r 5**
- Trimming tubes after bending
- Cutting tubes and profiles with band saws **/up to 120mm** – round/ and circular **up to 145mm** – also under angle
- Deburring of pipes and profiles for diameters **from 10mm to 120mm**
- Punching the shape of the sheet and notches with the use of presses
- Tube bending: hydraulic and electric bending machines:

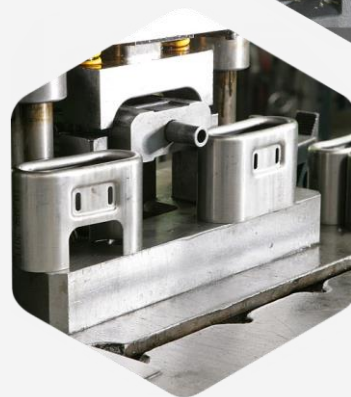
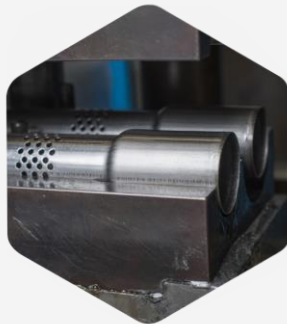
ERCOLINA		BLM Hydraulic		BLM ELECT 80	
Diameter	Bending Radius	Diameter	Bending Radius	Diameter	Bending Radius
54	90	25	51	50	65
50	90	50	90	53	75
57	90	57	90	55	75
63,5	90	Zdolność gięcia 57x1,5		63,5	90
76,1	115			65	90
Zdolność gięcia 76,1x1,5				70	120
				75	120
				Zdolność gięcia D80x2	

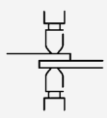


BENDING OF TUBES AND PROFILES

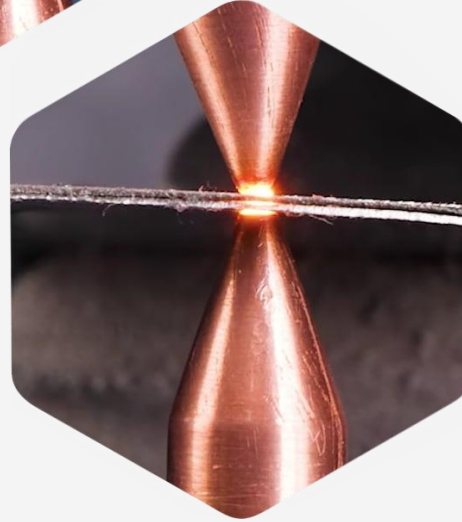
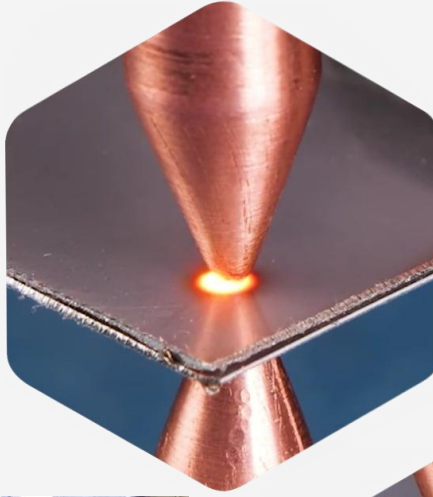


SHAPING





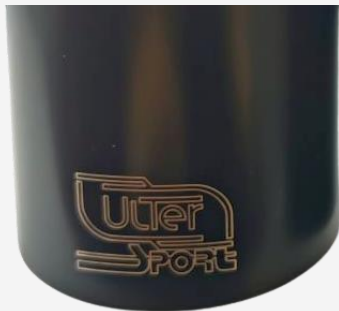
SPOT WELDING





LASER ENGRAVING

COMPANY OWNED PROJECT

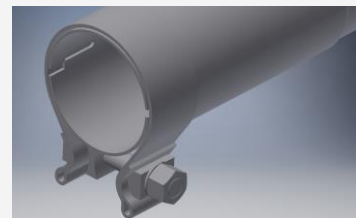
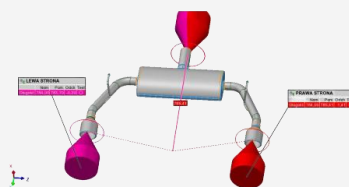
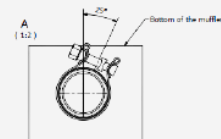
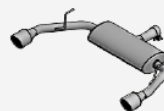
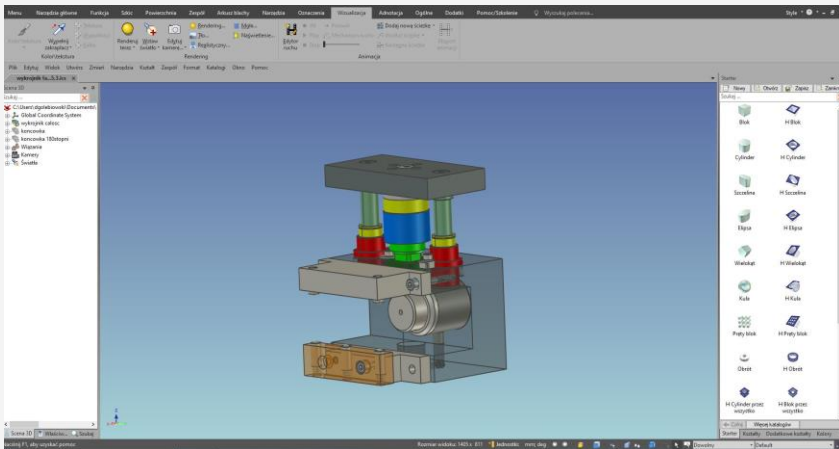
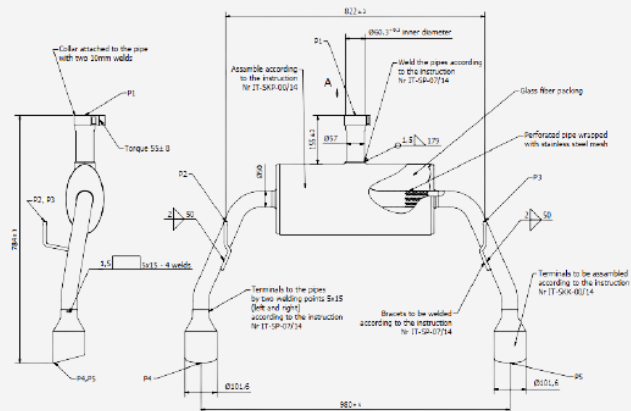
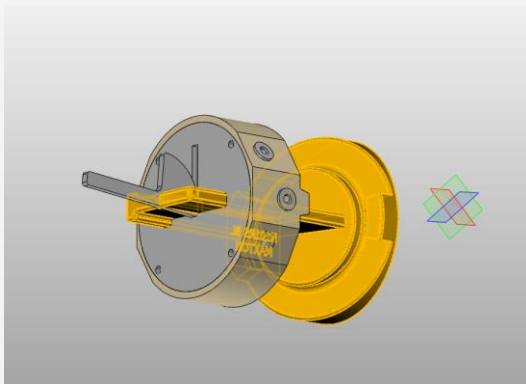




WASHING PARTS FROM OUR OWN PRODUCTION

Castor washer, equipped with asket with dimensions: **440x250x730mm** – surface tension **> 36 mN/m**





3D PRINTING:

Possibility to print from materials:

Single extrusion:

Z-ABS, Z-ASA Pro, Z-ESD, Z-FLEX, Z-GLASS, Z-HIPS, Z-NYLON, Z-PETG, Z-PLA, Z-PLA Pro, Z-ULTRAT, Z-ULTRAT Plus, BASF Ultrafuse® PP GF30, BASF Ultrafuse® PAHT CF15

Double extrusion:

Z-ABS, Z-ASA Pro, Z-ESD, Z-GLASS, Z-NYLON, Z-PETG, Z-PLA, Z-PLA Pro, Z-SUPPORT ATP, Z-SUPPORT Premium, Z-ULTRAT, Z-ULTRAT Plus



Working area:

265 x 265 x 300 mm

LASER CUTTING WITH:

FLASHCUT LF1530 3kW

KIMLA

Cutting of tubes and profiles

Range of tubes' diameter: 20-150mm

Rectangular profiles from 20x20 to 100x100

Length of the cut segment 3000mm

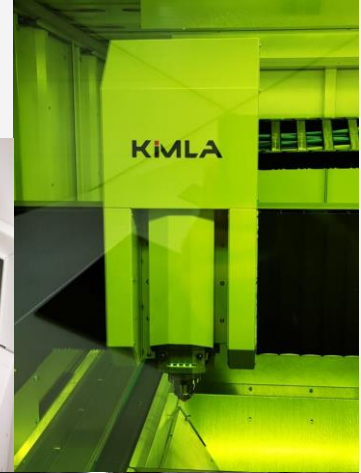
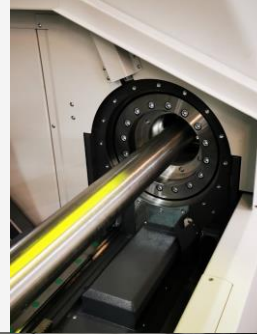
Thickness of tubes and profiles for cutting:

- * Black steel 4 mm
- * Stainless steel 8 mm

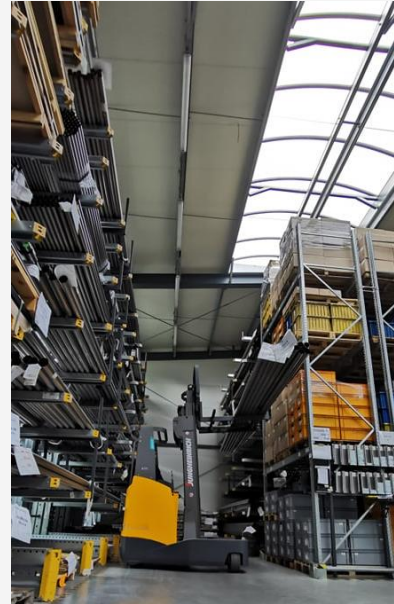
Metal sheet with max dimension 1500x3000mm

The laser can move in 3 axes for the cutting head - X Y (flat cut) Z (cutting height + cooperation with a pipe and closed profile feeder)

The feeder can move in 2 axes - B (rotation) T (front back).



OWN WAREHOUSES: RAW and FINISH GOODS

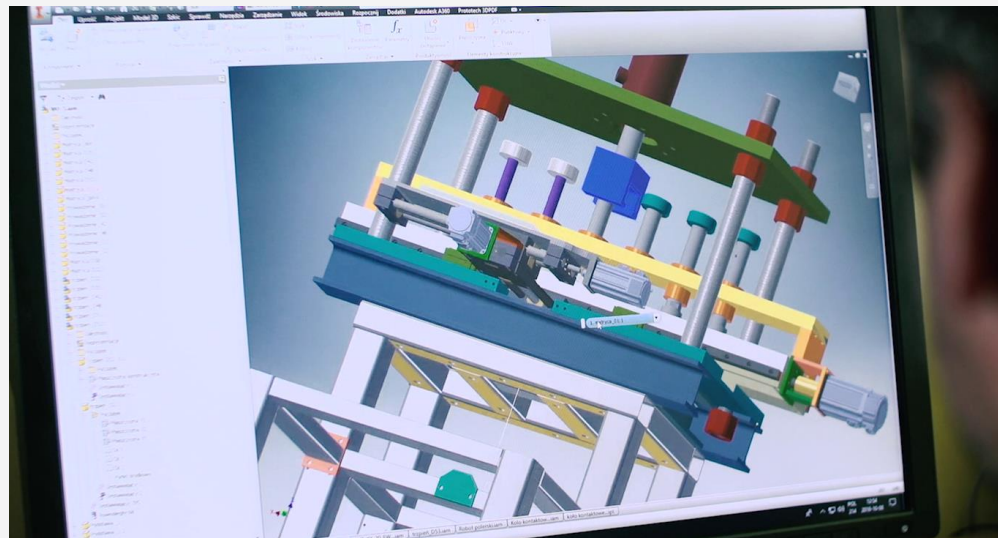




DESIGN AND MANUFACTURE OF TOOLING AND DEVICES FOR YOUR OWN NEEDS

Previous projects:

- Rolling machine for metal sheet blanks
- Welder for longitudinal TIG welding
- Laser engraving machine
- Automatic feeders
- A tool for sheet metal punching and stamping



Possibility of making non-standard machines



PAINT SHOP



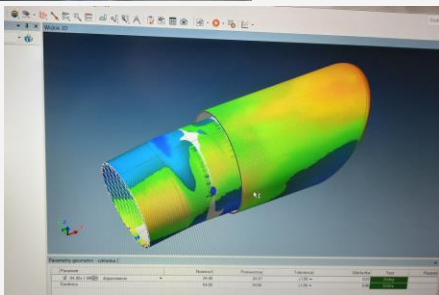
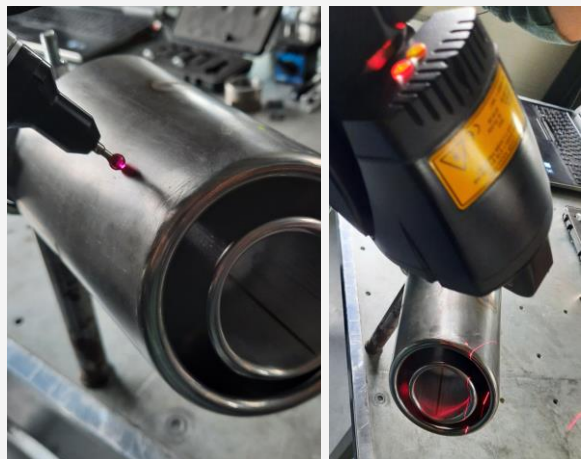
OPTIONAL ACCESS TO A POWDER COAT



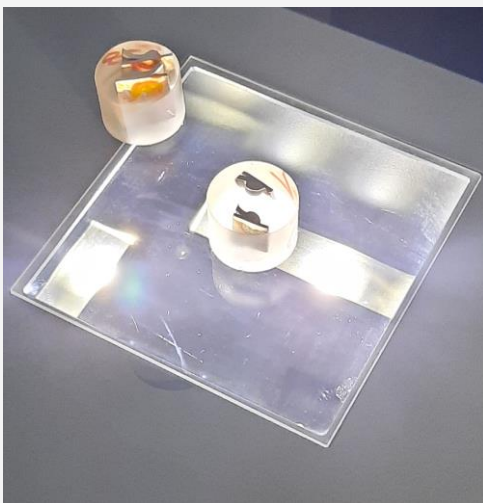
LABORATORY

MEASURING ARM

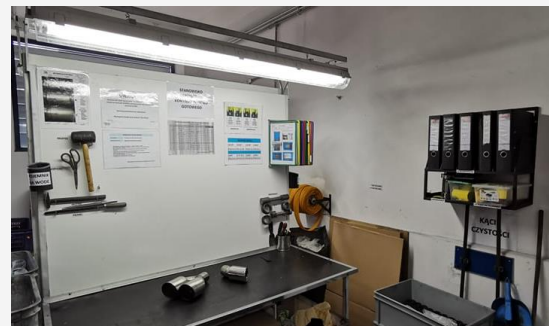
Romer Absolute Arm



DEVICE FOR WELD CONTROL

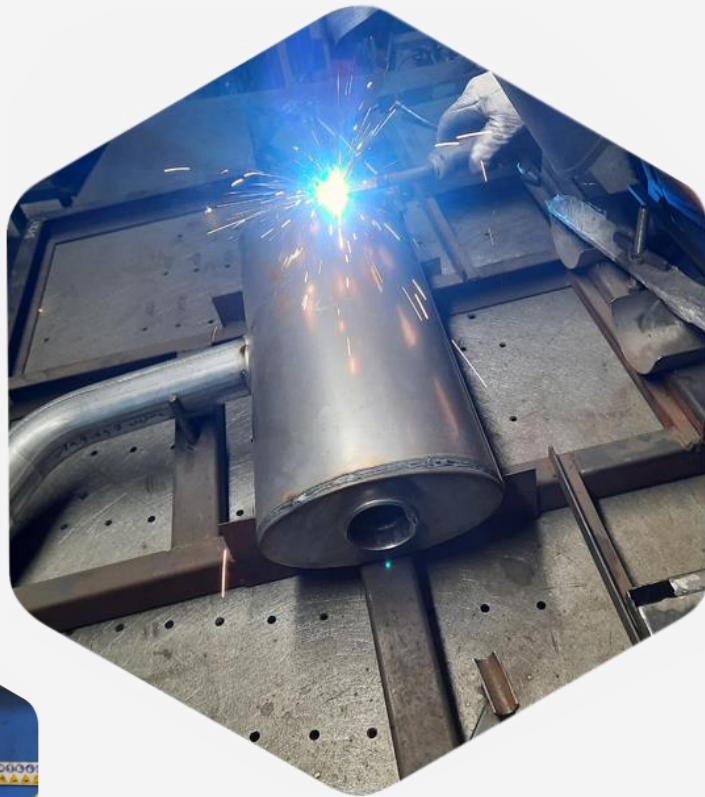


STATION FOR VISUAL CONTROL OF PARTS





ASSEMBLY





Production Line: Warehouse Trolley

Our line of warehouse trolleys combines aesthetics and robustness, designed with the most demanding customers in mind.

We offer customisable trolley sizes to optimise the specifics of any warehouse.

We use the highest quality materials to ensure the durability and reliability of the products, while ensuring a modern look.



Production Line: Workbenches

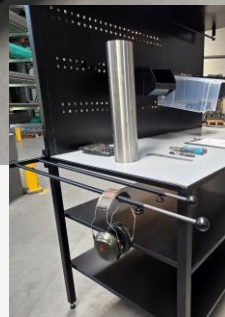
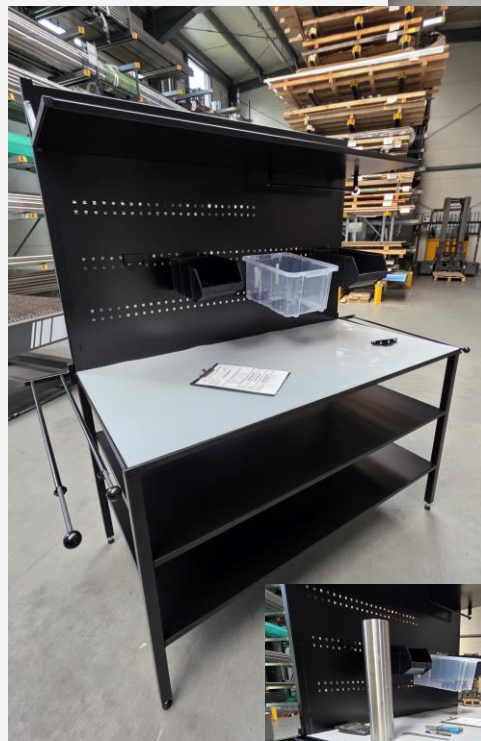
Our workbenches offer more than just a sturdy structure — they feature thoughtful solutions that enhance work comfort and efficiency.

Thanks to our proprietary mounting elements, each bench can be easily expanded with additional accessories such as baskets, rails, holders, and more, tailored to the specific needs of the user.

We provide a personalized approach to every project, delivering custom-made solutions based on individual client requirements.

We focus on high-quality craftsmanship, structural stability, and design aesthetics that go hand in hand with functionality.

Our workbenches are a guarantee of long-lasting durability and exceptional working comfort.



Realisations made for our clients

We showcase the components we have made for our customers - from steering wheels to specialised vehicle equipment to components of exceptional strength and precision.

Our realisations also include laser-personalised components made from different types and thicknesses of steel and aluminium.

Each detail is tailored to the specific requirements of our customers and sets the highest quality standards.





NEAREST INVESTMENTS

01

AUTOMATIC PLANETARY POLISHING MACHINE

02

SCANNER 3D – reverse engineering

03

PRESS BREAK

04

WELDING ROBOT

*Robotic welding station with a Fronius CMT source with a turntable working area:
2000x1300 mm; load capacity: 500 kg*

05

Technical data of the press brake:

SAFANDARLEY SERVO-ELECTRIC PRESS BRAKE model E-BRAKE STANDARD 100-3100

Pressure: **1000 kN (100 tons)**

Stroke of the slider **300 mm**

Clearance Q = **590 mm**

Top beam downhill speed **75 mm / s**

Top beam return speed **75 mm / s**

Accuracy of the upper beam **+/- 0.005 mm**

Maximum speed of the buffer fingers **350 mm / s**

Range of the stop along the R axis **150 mm**

Range of the stop over the full bending length **1000 mm**



LOCATION



Ulter-Sport Sp. z o.o., ul. Wyzwolenia 24, 34-350 Węgierska Góra



OUR TEAM

